



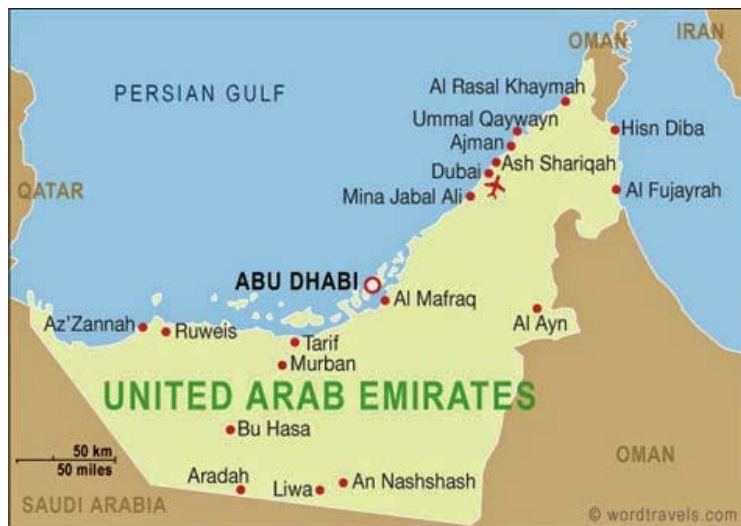
Graduate Studies

Introduction

FALL 2018

Abu Dhabi, United Arab Emirates

- Capital: Abu Dhabi
- UAE population: 9.5 Million
- Abu Dhabi population: 2.9 Million
- Language: Arabic (official) & English (widely used)
- International Community: over 180 Nationalities



Abu Dhabi, United Arab Emirates

- Cosmopolitan Modern City
- Safe & Friendly
- Clean Environment
- Indoor & Outdoor Activities
- Well Connected to other cities including Dubai
- Direct Flights to many International Destinations



Khalifa University of Science & Technology - KU

- **1st Ranked in the UAE**
- **Approximately 3500 students**
- **Nearly 370 international faculty**
- **Excellent Faculty to Student Ratio: 10:1**
- **Excellent Facilities across 3 Campuses**
- **World-Class Research Labs**
- **Three Colleges:**
 - Engineering
 - Arts and Science
 - Medicine and Health Sciences
- **International Graduate Students Community**



Graduate Programs - Master's

- **MSc in Chemical Engineering**
- **MSc in Electrical & Computer Engineering**
- **MSc in Engineering Systems & Management**
- **MSc in Material Science and Engineering**
- **MSc in Mechanical Engineering**
- **MSc in Petroleum Engineering**
- **MSc in Sustainable Critical Infrastructure**
- **MSc in Water and Environmental Engineering**
- **MSc by Research in Engineering**
- **Master of Science in Applied Chemistry**
- **Master of Science in Computing and Information Science**
- **Master of Science in Petroleum Geoscience**
- **MEng in Health, Safety and Environmental Engineering**
- **MSc in Information Security***
- **MSc in Nuclear Engineering***
- **Master of Arts in International and Civil Security***

Graduate Engineering Programs - PhD

- Aerospace Engineering
- Biomedical Engineering
- Chemical Engineering
- Civil Infrastructure and Envir. Engineering
- Electrical and Computer Engineering
- Engineering Systems & Management
- Material Science and Engineering
- Mechanical Engineering
- Nuclear Engineering
- Petroleum Engineering
- Petroleum Geoscience
- Robotics



Graduate Admissions Requirements- Master's

- Bachelor's degree in a relevant discipline with a minimum Cumulative Grade Point Average (CGPA) of 3.0 out of 4.0, or equivalent
- A minimum level of English proficiency in the form of either:
 - iBT TOEFL (internet-based test) score of 91 or equivalent, or
 - Overall academic IELTS score of 6.5
- A minimum quantitative score of 150 in the general Graduate Record Examination (GRE)
- A minimum of two referee recommendations (provided via online form).
- Statement of purpose (500-1,000 words).
- Admission interview



For more information:

<https://www.ku.ac.ae/admissions/graduate-admissions/>

Graduate Admissions Requirements- PhD

- Master's degree in a relevant discipline with a minimum Cumulative Grade Point Average (CGPA) of 3.25 out of 4.0, or equivalent
- A minimum level of English proficiency in the form of either:
 - iBT TOEFL (internet-based test) score of 91 or equivalent, or
 - Overall academic IELTS score of 6.5
- A minimum quantitative score of 150 in the general Graduate Record Examination (GRE)
- A minimum of two referee recommendations (provided via online form).
- Statement of purpose (500-1,000 words).
- Research statement (500-1,000 words).
- Admission interview

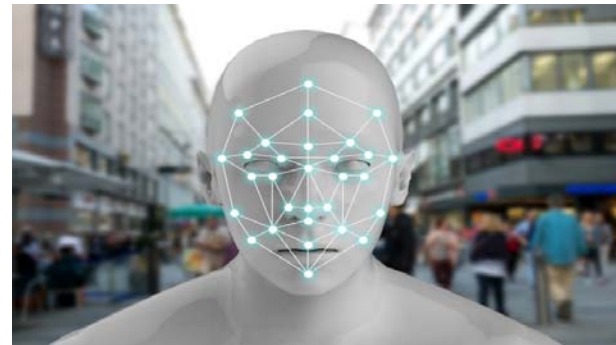
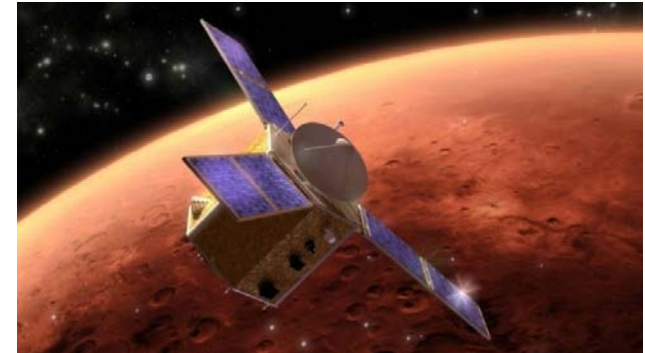


For more information:

<https://www.ku.ac.ae/admissions/graduate-admissions/>

Graduate Scholarships – MSc & PhD

- Full coverage of tuition fees
- Medical insurance coverage for students under the Khalifa University visa.
- Support to attend international research conferences.
- Monthly stipend for GRTA Scholarship:
 - During MSc: AED 8,000 (Approx. USD \$2,000)
 - During PhD: AED 10,000 (Approx. USD \$2,700)



For more information:

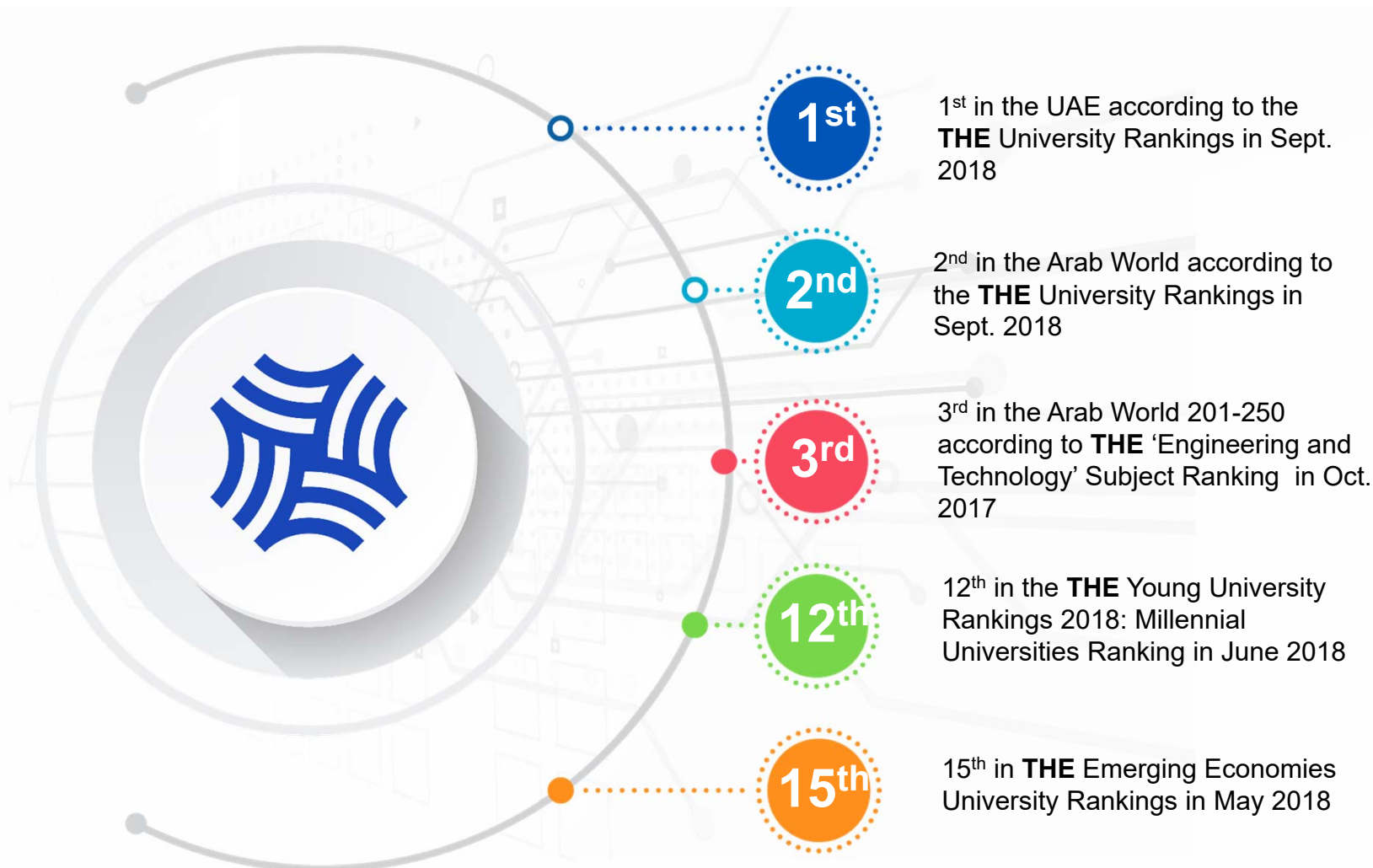
<https://www.ku.ac.ae/admissions/graduate-admissions/graduate-scholarships/>

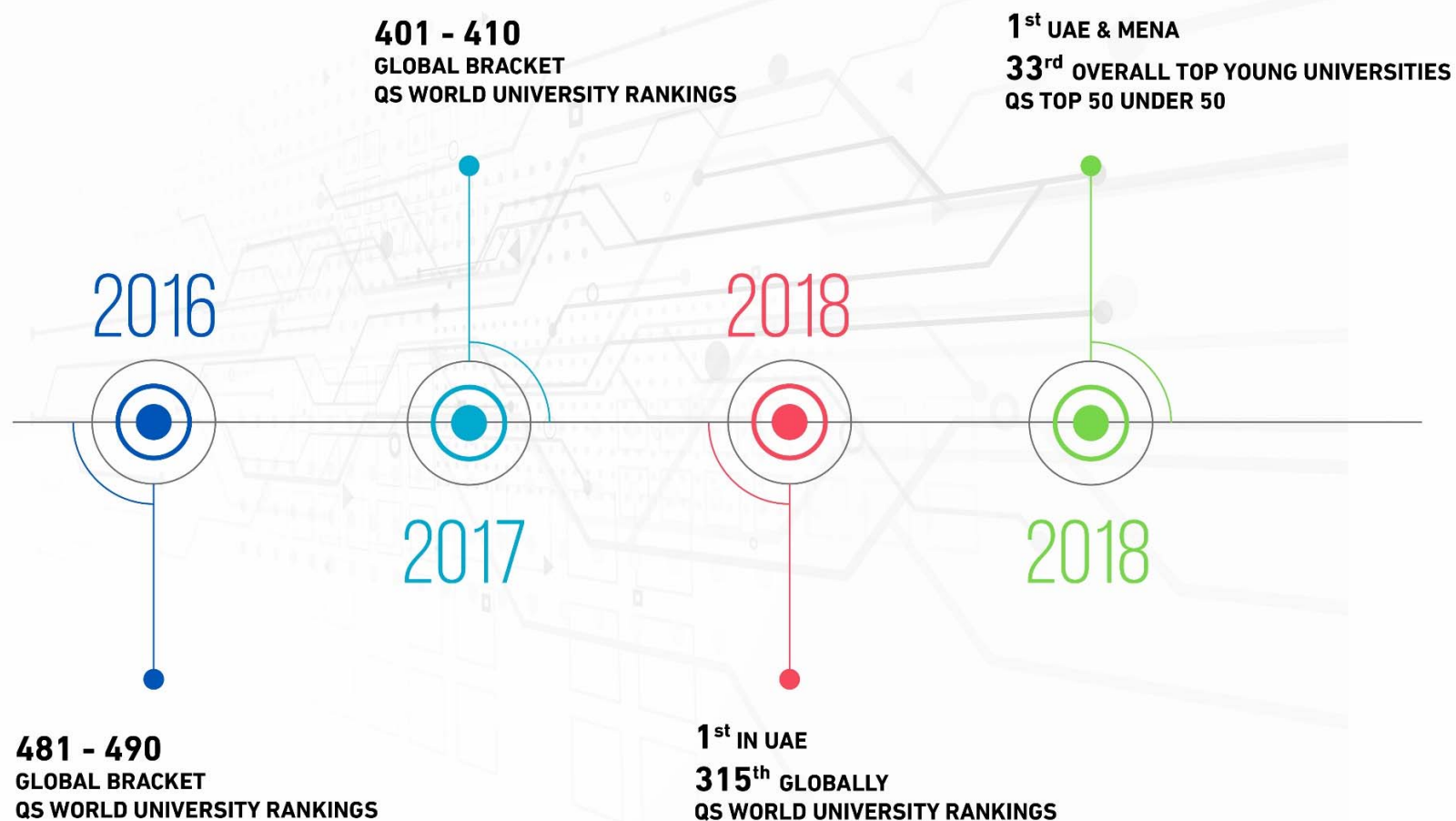
Research Centers

- Research Center for Renewable Energy Mapping and Assessment (ReCREMA)
- Nuclear Technology Center (NTC)
- Advanced Power and Energy Center (APEC)
- Sustainable Bioenergy Research Consortium (SBRC)
- Center for Membranes and Advanced Water Technology (CMAT)
- Center for Catalysis and Separation (CeCaS)
- Gas Research Center
- Aerospace Research and Innovation Center (ARIC)
- Healthcare Engineering Innovation Center (HEIC)
- Center for Biotechnology (BTC)
- System-on-Chip Center (SoCC)
- KU Center for Cyber-Physical Systems (C2PS)
- KU Center for Autonomous Robotic Systems (KUCARS)
- Center of Excellence on RF/5G Communications
- Center of Excellence on Integrated Photonics
- Emirates ICT Innovation Center (EBTIC)

How about the Spanish students that graduated from our university in previous years. Where do they work now?

Programe	Year/Sem	Position	Company	Location	Gender
CHE	1602	Consultant	Burotec	París	M
EPE	1402	Manager Data Analysis	Etihad Airways	Abu Dhabi	F
ESM	1202	Unknown	Unknown	Unknown	F
MEG	1502	R&D Hardware	IDNEO	Barcelona	M
MEG	1302	Consultant Associate	Oliver Wyman	Madrid	M
MEG	1402	PhD student	Khalifa University	Abu Dhabi	M
MEG	1302	Sen. Vice President, Product & Ops.	Coverwallet Insurance	New York	M
MEG	1402	Engineering consultant	EnergyNest	Sevilla	M
MEG	1402	Senior financial consultant	NFQ advisory	Madrid	M
MSE	1503	PM Officer	AERTEC	Madrid	M
MSE	1502	Process Engineer	Bosch	Madrid	M
MSE	1402	Team manager	Drivex Motorsport	Madrid	M
SCI	1602	Energy Auditor	Smart4Power	Dubai	M
WEN	1402	Project Officer JRC	European Commision	Italy	F
WEN	1302	Associate Professional	IRENA	Abu Dhabi	F







4930 + ARTICLES

16 DEDICATED RESEARCH CENTERS

300 + INVENTION DISCLOSURES

228 STATE-OF-THE-ART LABORATORIES

3570 + CONFERENCE PAPERS

70 + ISSUED PATENTS

